

# Capture Point

*One day all e-learning will be made like this*



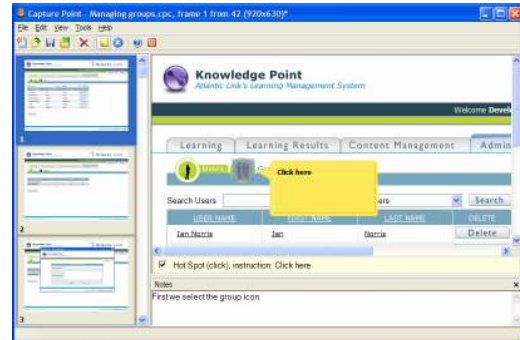
## Capture Point is Atlantic Link's unique tool for the automatic creation of online IT training courses

Capture Point allows quality on-line learning to be produced in hours instead of weeks.

Capture Point runs alongside any IT application and accurately captures screens and all interaction.

Capture Point projects are imported into Content Point to instantly create and publish quality systems training courses.

All imported courses remain fully content manageable once imported into Content Point.



## Key features and benefits

### Capture any IT application

Capture Point is suitable for any Windows application, web application or IBM green screen (mainframe) application.

### Incredibly rapid screen capture

Our customers are capturing over 300 screens per day with Capture Point

### Ease of use

Just switch on the recording session and work as normal. Capture Point will automatically record everything you do.

### Annotate screens

Notes can be added to each screen to automatically add contextual information to the e-learning.

### Dynamic import into Content Point

Capture Point projects are imported directly into Content Point to instantly create interactive e-learning.

## Other products



### Content Point

Content Point is at the core of Atlantic Link's unique e-learning infrastructure and enables quality on-line e-learning to be produced at unprecedented speeds.



### Knowledge Point

Atlantic Link's integrated Learning Management and Content Management System. Together, they enable content management of courses, access to learning and monitoring of progress. All this with just a web connection and a browser.

## System requirements

To install and use Capture Point, the following minimum specification of hardware and software is required:

- Pentium-3 600 MHz
- 128 MB RAM
- 60 MB available hard disk space
- Windows 2000 Professional (Service Pack 4) or Windows XP Professional
- Microsoft .Net Framework 1.1

## For more information

Contact Atlantic Link on +44 (0)115 9061375 or email us on [sales@atlantic-link.co.uk](mailto:sales@atlantic-link.co.uk).



**Atlantic Link**

Strelley Hall, Nottingham, NG8 6PE  
Tel: +44 (0)115 9061375 Web: [www.atlantic-link.co.uk](http://www.atlantic-link.co.uk)